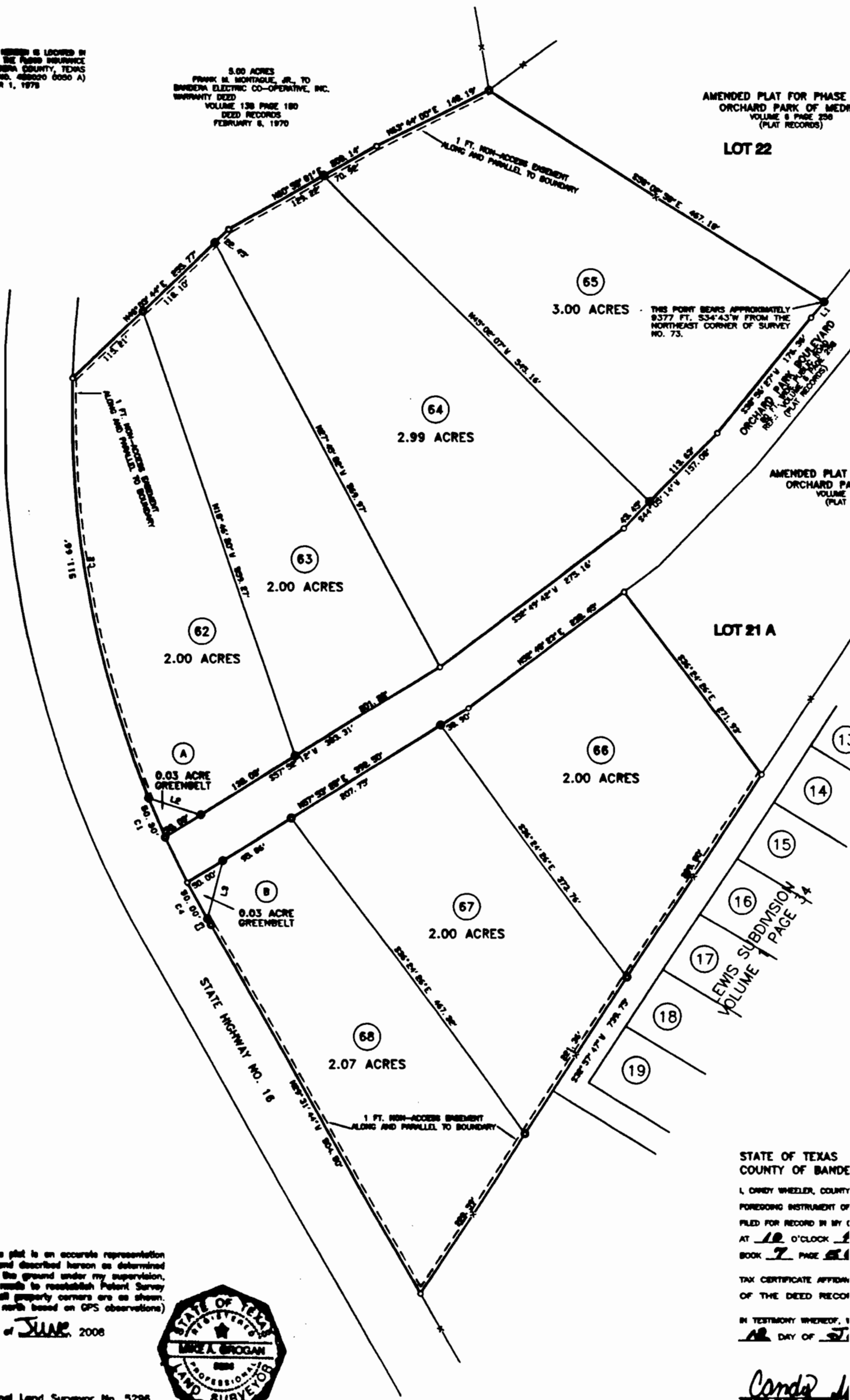


SPRINT SURVEY METHOD IS LOOKED IN ACCORDANCE TO THE FLOOD INSURANCE MAP FOR BANDERA COUNTY, TEXAS (UNITY-PANEL NO. 480020 0000 A) DTE: NOVEMBER 1, 1976

3.00 ACRES
FRANK M. MONTAGUE, JR. TO
BANDERA ELECTRIC CO-OPERATIVE, INC.
WARRANTY DEED
VOLUME 138 PAGE 180
DEED RECORDS
FEBRUARY 8, 1970

AMENDED PLAT FOR PHASE
ORCHARD PARK OF MEDINA
VOLUME 8 PAGE 258
(PLAT RECORDS)

LOT 22



I certify that this plat is an accurate representation of the land shown and described herein as determined by me on the ground under my supervision, that a survey was made to reestablish Patent Survey corners; that all property corners are as shown. (Note = True north based on GPS observations)

4th day of JUNE, 2008



Mike A. Brogan
Professional Land Surveyor No. 5298

STATE OF TEXAS
COUNTY OF BANDERA
I, CAROL WHEELER, COUNTY CLERK
HEREBY INSTRUMENT OF
FILED FOR RECORD IN MY
OFFICE AT 10 O'CLOCK
A.M. ON JUNE 2, 2008
BOOK 7 PAGE 51
TAX CERTIFICATE AFFIDAVIT
OF THE DEED RECORDS
IN TESTIMONY WHEREOF, I
HEREBY SET MY HAND AND
SEAL OF OFFICE ON THE
2nd DAY OF JUNE, 2008

Carole Wheeler
County Clerk, Bandera County, Texas